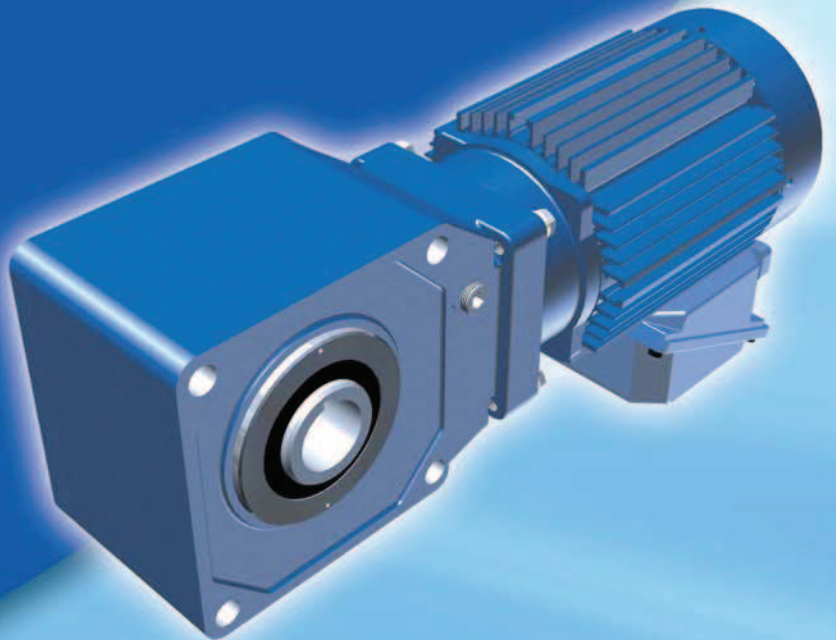


Sumitomo Drive Technologies  
*Always on the Move*

# Hyponic®

---

Hypoid Right Angle  
Gearmotor and Reducer



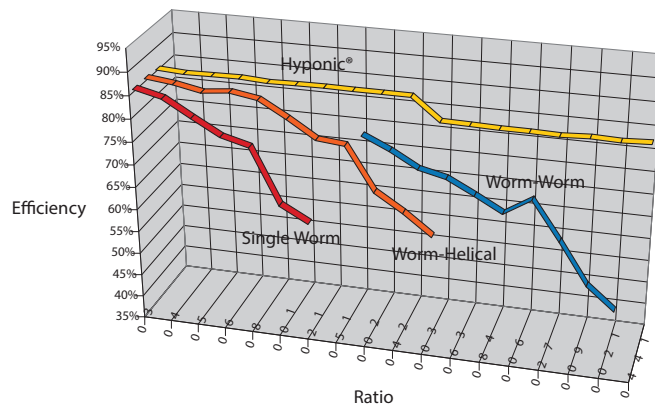


## Patented, High-Performance Gearmotors and Reducers Featuring All-Steel Hypoid Gearing



- ▶ **Outstanding Efficiency Saves Money**  
Efficiencies far higher than worm gearing. Highly efficient across all ratios. No cooling fans required.

Hyponic<sup>®</sup> hypoid gearing demonstrates efficiencies of 80-85% within the range of 30 to 1440:1.

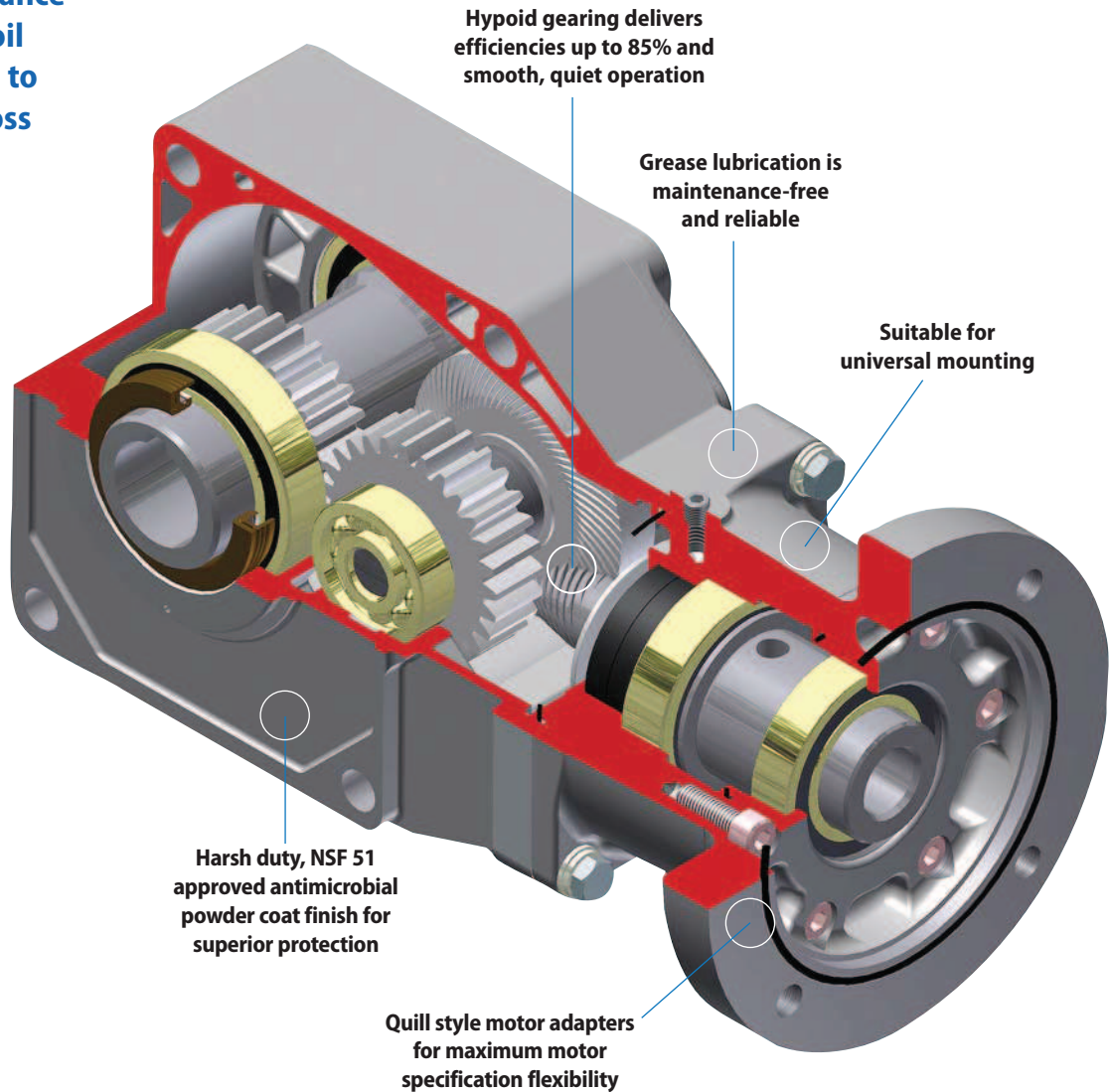


To request a catalog, or for more information on any of our high quality products, please visit our Website.

 **Energía Controlada**  
de México S.A. de C.V.

Tel: (55) 5573-5850, 5573-5837; 5513-0252, 5655-2302  
ventas@energiacontrolada.com

- ▶ Grease lubricated design is maintenance free, requires no oil changes and is up to 85% efficient across all ratios



## Quiet, Compact and Maintenance-Free

- ▶ All-steel hypoid gear design transmits torque more efficiently for more torque density in a compact unit

## Product Description

The Sumitomo Hyponic® Gearmotor represents 60 years of excellence in the design and manufacture of premium gearing solutions. With millions of Hyponics currently in service, the product features a compact, modular housing, **maintenance-free grease lubrication and high efficiency operation**. Options include C-face quill design; unique FKM antimicrobial, multi-lipped rotary output seal; corrosion resistant, stainless output shaft and hardware; and synthetic NSF H-1, food-grade lubricant. NSF51 antimicrobial powder coating makes Hyponic® the ideal choice for food, beverage, and pharmaceutical industries. Sumitomo's patented, all-steel hypoid gear technology leads the industry in quiet operation and high efficiency. The Hyponic® significantly outperforms worm gearing across ratios from 30:1 to 1440:1.

## Features & Benefits

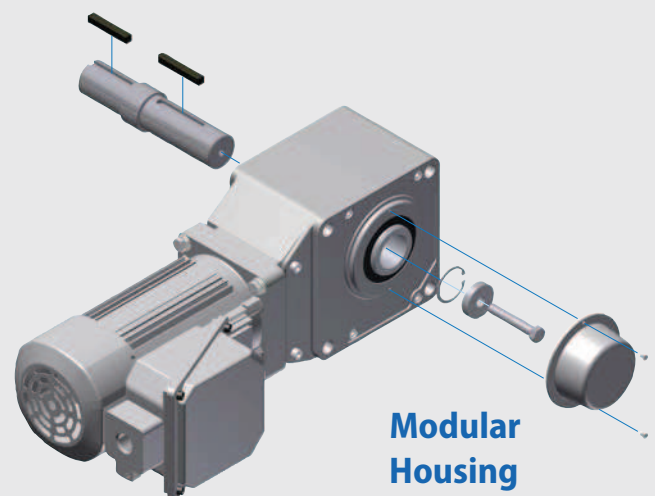
Patented Hyponic gear technology is **up to 85% efficient** across all ratios and requires no cooling fan

- **NSF 51 approved antimicrobial powder coating** protects against the growth of bacteria, mold, and fungus.
- **All-steel hypoid gear design** transmits torque more efficiently for more torque density in a compact unit
- **Maintenance-free grease lubrication** eliminates oil changes
- **Compact, lightweight** design in an aluminum, corrosion resistant housing with optional washdown protection
- Hollow bore makes **installation and retrofit quick and easy**
- **Extremely quiet**, smooth operation is ideal for commercial use
- **Two-Year warranty**
- Optional, popular keyed-hollow bore sizes available from stock: 1-3/16", 1-7/16", 1-15/16", 2-3/16"

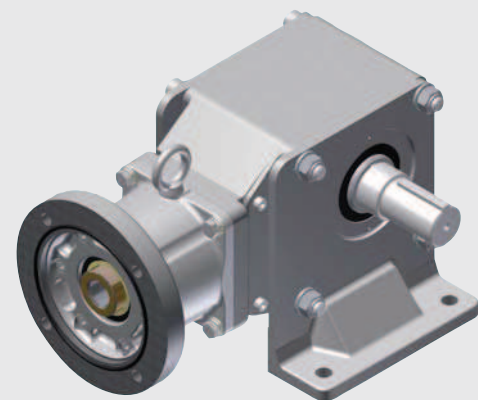
## Specifications

<b>Ratios:</b>	5:1 up to 1440:1
<b>HP:</b>	1/8 to 15 HP
<b>Maximum Torque:</b>	13,100 in-lbs.
<b>Electrical:</b>	230/460 VAC (Single and 3-Phase)
<b>Housing:</b>	Lightweight, corrosion-resistant aluminum
<b>Mounting:</b>	Flange, Bolt-On Feet
<b>Shafts:</b>	Hollow, Solid
<b>Input:</b>	Quill, C-Face Adapter or Integral Motor

### ► Optional plug-in shaft and bolt-on feet enhance Hyponic® mounting flexibility



**Modular Housing**



**C-Face Quill Adapter, Plug-in Shaft, Foot Mount**

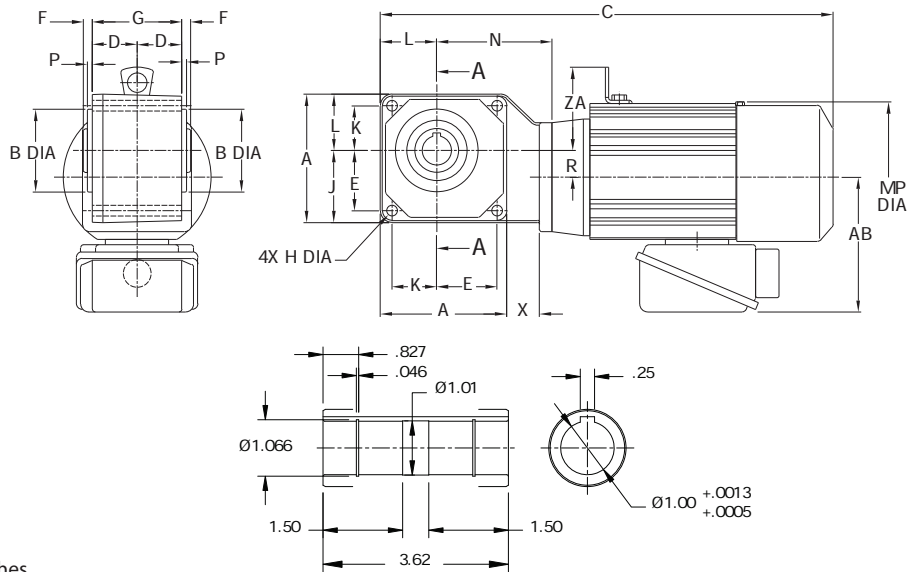


### ► Applications

- Bottling & Food Processing
- Commercial Bakery Lines
- Pharmaceutical Machinery
- Automotive Assembly Plants
- Conveyor Lines & Material Handling
- Wood Processing & Paper Products
- Residential Elevators & Lifts
- Automated Bay & Dock Door Drives
- Crushers
- Dehydrators
- Packaging

# Dimensions

## Frame Size 1200 RNYM-1220/30Y



All dimensions are in inches.

Gearmotors

Dimensions

Model	A	B min	B max	D	E	F	G	H	J	K	L	N	P	R	X
1220	4.53	3.07	3.071	1.46	2.24	0.35	2.91	0.35	2.60	1.57	1.93	3.78	2.00	1.10	0.79
1230	5	3.07	3.071	1.61	2.56	0.35	3.23	0.35	2.99	1.57	2.01	3.74	0.20	.510	0.31

### Standard Three-Phase Motor

Model	HP	AB	ZA	Motor			Brakemotor		
				C	MP	Wt. (lbs.)	C	MP	Wt. (lbs.)
RNYM01-1220Y(-B)-40~60	1/8	5.04	-	11.46	4.69	15	12.83	4.88	19
RNYM02-1220Y(-B)-5~60	1/4	5.04	-	13.11	4.88	19	14.37	4.88	22
RNYM03-1220Y(-B)-5~60	1/3	5.04	-	13.9	4.88	21	15.16	4.88	24
RNYM05-1220Y(-B)-5~30	1/2	5.04	-	13.9	4.88	21	15.16	4.88	24
RNYM01-1230Y(-B)-80~240	1/8	5.04	-	11.5	4.69	17	12.87	4.88	20



Tel: (55) 5573-5850, 5573-5837; 5513-0252, 5655-2302  
 ventas@energiacontrolada.com